

RWW
9500 SERIES



30 OTIS ST.
SAN FRANCISCO, CA

9500 SERIES

4SSG WINDOW WALL SYSTEM

The RWW 9500-series is a 4-sided structurally glazed unitized window system, with a 5" (127mm) structural mullion depth. This patented design (US #9,663,945) integrates a glass slab cover detail that gives this window system the appearance of a structurally glazed curtain wall facade.

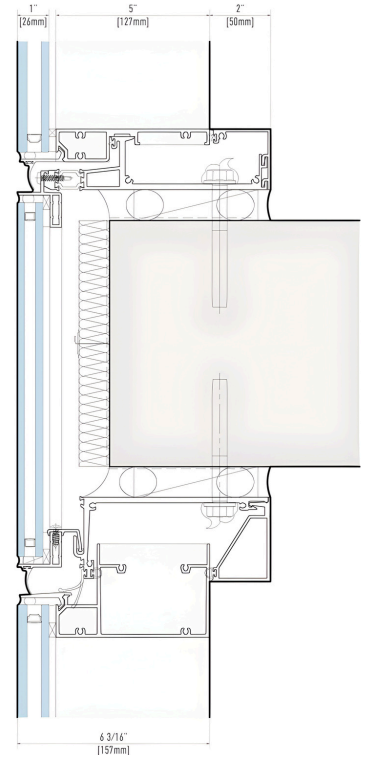
Offers a multitude of infill options for structurally glazed application, including but not limited to; insulated glass, metal, porcelain tile, and GFRC.



System Features

- Pressure equalized system
- Zero sight-line outswings vents
- Fully unitized shop built system
- Glass from 1" to 2" thick [26mm to 52mm]
- Single action handle, multi-point locking system
- 1-pc extrusion slab cover options
- Full head/sill/jamb receptor system
- 2.5" base sightline with available 3" sightline
- Interior polyester powder coat finish, custom color
- Single action ADA compliant operable vents
- Slab cover infill IG spandrel, extrusion options
- Fixed, project-out awning casements
- Flushwall, projected beyond slab edge
- Slab cover infill flush with exterior face of glass
- 4-sided structurally glazed system
- Structural mullion depth 5"

Section Detail



Technical Data

Operable Air Infiltration	0.10 CFM/SQ.FT. @6.24 PSF	NFRC U-Factor	0.20 - 0.45 BTU/hr-ft ² ·°F
Fixed Air Infiltration	0.06 CFM/SQ.FT. @6.24 PSF	Frame Depth	5" (127mm)
Water Performance	15 PSF	Frame Sightline	2-1/2" (63.5mm) / 3" (76mm)
CRF	58 - 72	Spandrel OITC	32 - 38
Spandrel STC	38 - 46	Vision STC	31 - 54



Sol Modern
Phoenix, AZ