

**RWW**  
9700 SERIES



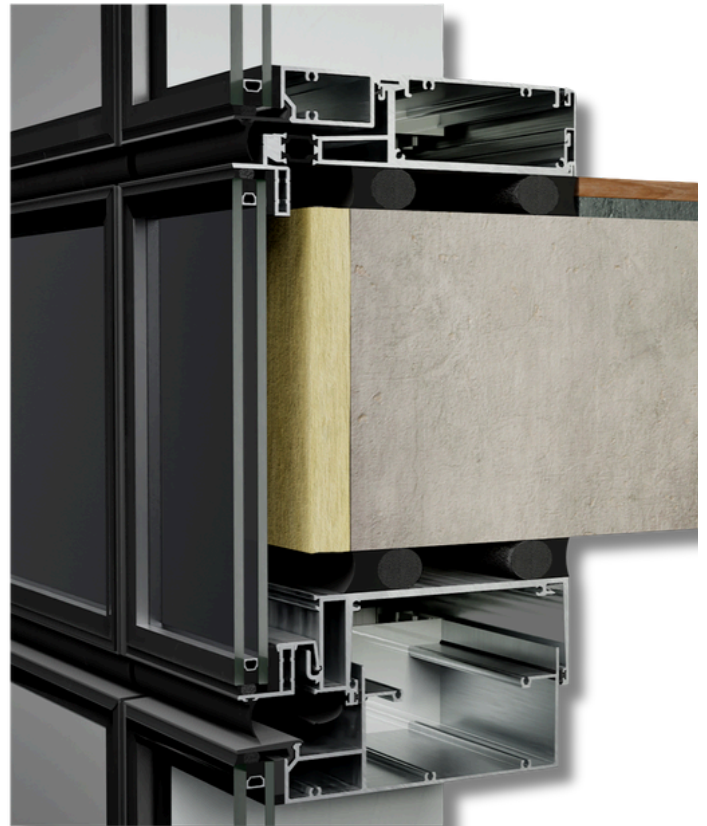
NEIU  
Chicago, IL

# 9700 SERIES

## 4SSG WINDOW WALL SYSTEM

The RWW 9700 Series is a 4-sided structurally glazed unitized window system, with a 7-5/8" (194mm) structural mullion depth. Implements engineering principles matching other systems, with added structural capacity for larger panel sizes and higher wind loads.

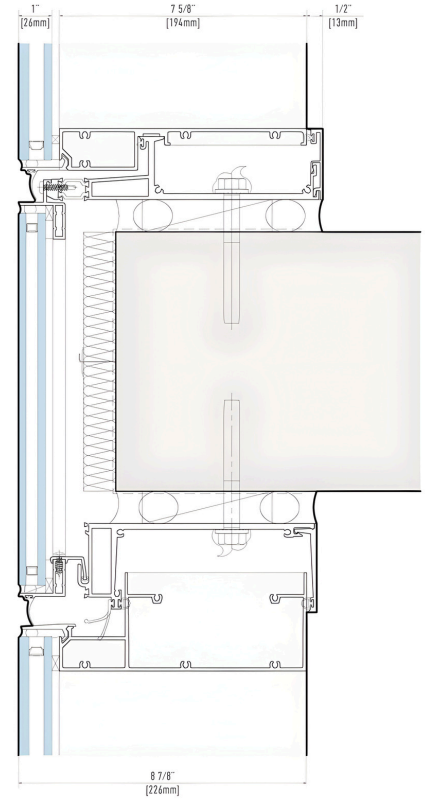
Offers the ability to integrate/switch with other systems between floors while maintaining consistent exterior finished appearance.



## System Features

- Pressure equalized system
- Zero sight-line outswings vents
- Fully unitized shop built system
- Glass from 1" to 2" thick [26 mm to 52mm]
- Single action handle, multi-point locking system
- 1-pc extrusion slab cover options
- Full head/sill/jamb receptor system
- 3" base sightline with available 3.5" sightline
- Interior polyester powder coat finish, custom color
- Single action ADA compliant operable vents
- Slab cover infill IG spandrel, extrusion options
- Fixed, project-out awning casements
- Exterior 2/3-coat PVDF finish, custom color
- Slab cover infill flush with exterior face of glass
- High span capabilities, project beyond slab edge
- 4-sided structurally glazed system
- Structural mullion depth 7-5/8"

## Section Detail



## Technical Data

Operable Air Infiltration	0.10 CFM/SQ.FT. @6.24 PSF	NFRC U-Factor	0.20 - 0.45 BTU/hr.ft2.°F
Fixed Air Infiltration	0.06 CFM/SQ.FT. @6.24 PSF	Frame Depth	7-5/8" (194mm)
Water Performance	15 PSF	Frame Sightline	3" (76mm)
CRF	58 - 69	STC	31 - 42

