

SYSTEM FEATURES

- Structural mullion depth 5"; thermal and acoustic performance
- Captured glazed system; glazed vision/spandrel/shadow-box
- Fully unitized shop built system
- Fixed, project-out awning, in-swing casement
- Zero sight-line project-out vents
- Single action handle, multi-point locking system
- Single action ADA compliant operable vents
- Pressure equalized system
- Interior polyester powder coat finish, custom color
- Exterior 2/3-coat PVDF finish, custom color
- Integral metal panel infill options
- Integral louver infill options
- 1-pc extrusion slab cover options
- Full head/sill/jamb receptor system
- Glass from 0.94" to 1.65" thick [24 mm to 45mm]
- Shop fitted fully sealed/insulated back-pans

RWW 7000 SERIES PROPERTIES

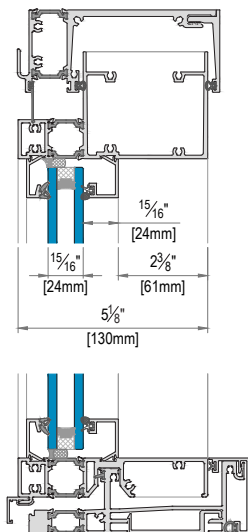
Allowable Air
0,10 CFM/SQ.FT. @6.24 PSF

Water infiltration
12 PSF

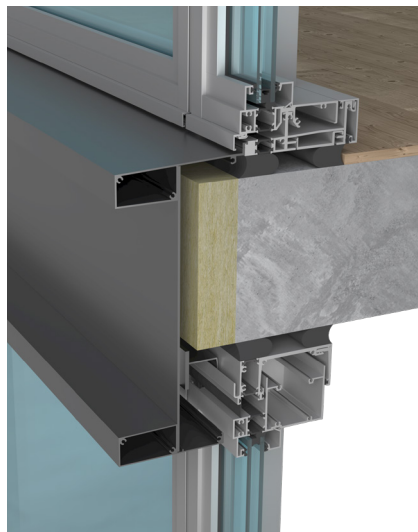
NFRC U-Factor
0,22-0,36 BTU/hr-ft²°F

CRF: -
STC: 32 to 45

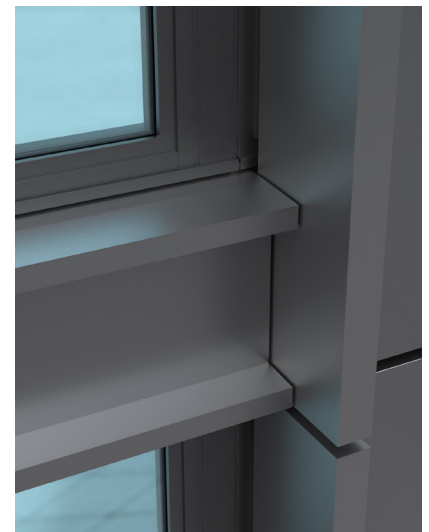
SYSTEM DETAILS



TYPICAL RWW 7000 SERIES SECTION DETAIL



RWW 7000 SERIES SECTION VIEW



EXTERIOR VIEW RENDERING FOR 170 N. PEORIA, CHICAGO



EXTERIOR VIEW RENDERING FOR 170 N. PEORIA, CHICAGO



EXTERIOR VIEW RENDERING FOR 170 N. PEORIA, CHICAGO