

SYSTEM FEATURES

- Flushwall, projected beyond slab edge
- Structural mullion depth 5"
- 4-sided structurally glazed system
- Slab cover infill flush with exterior face of glass
- Slab cover infill IG spandrel, extrusion options
- Fully unitized shop built system
- Fixed, project-out awning, project-out casement
- Zero sight-line vents
- Single action handle, multi-point locking system
- Single action ADA compliant operable vents
- Pressure equalized system
- Interior polyester powder coat finish, custom color
- 1-pc extrusion slab cover options
- Full head/sill/jamb receptor system
- Glass from 1" to 2" thick [26mm to 52mm]

RWW 9500 SERIES PROPERTIES

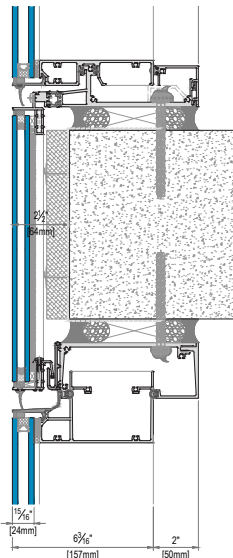
Allowable Air
0,10 CFM/SQ.FT. @6.24 PSF

Water infiltration
12 PSF

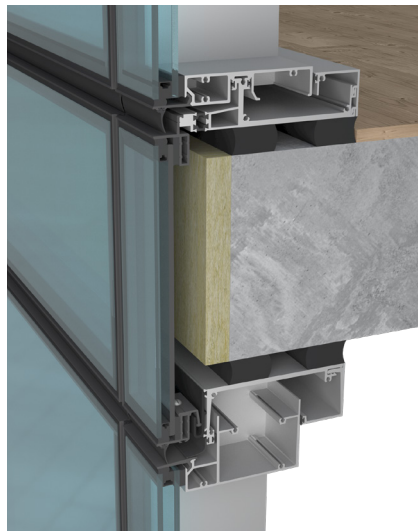
NFRC U-Factor
0,20-0,45v BTU/hr.ft².°F

CRF: 58 to 72
STC: 31 to 45

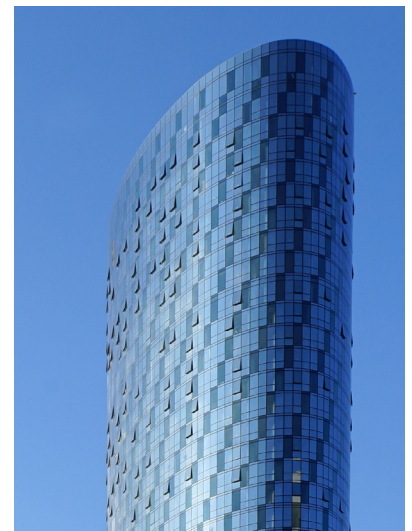
SYSTEM DETAILS



TYPICAL RWW 9500 SERIES SECTION DETAIL



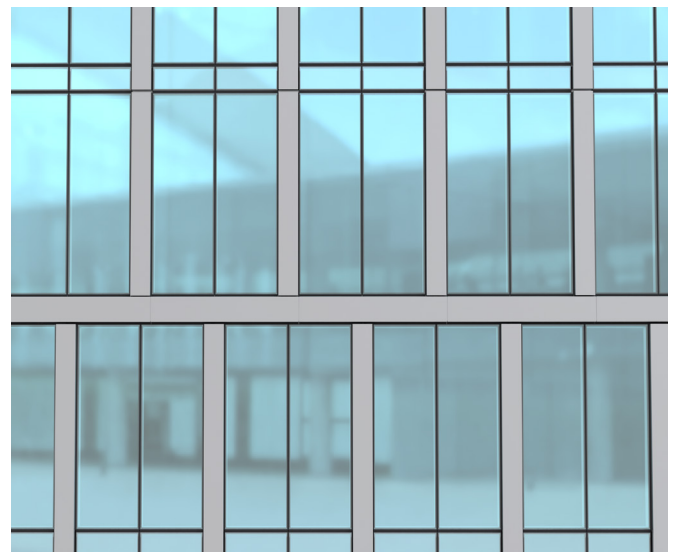
RWW 9500 SERIES SECTION VIEW



EXTERIOR VIEW



EXTERIOR VIEW



EXTERIOR VIEW