

## SYSTEM FEATURES

- Universal design allows maximum design flexibility and unique infills.
- Patented speed anchor reduces crew size and allows for expedited floor enclosure.
- Flexible Stack Joint location provides freedom to move stack above the slab to accommodate knee walls and interior partitions.
- Large continuous raceway allows simple integration of electrochromic, photovoltaic, low voltage/smart building systems.
- Customizable interior trim options allow for clean termination regardless of interior finish.
- Available in standard 3" x 8" system or 3" x 11.25" "Deep" system to accommodate large spans without unnecessary, burdensome steel reinforcing.

## PROPERTIES



**Air Infiltration (ASTM E283)**  
 $< .03 \text{ cfm/ft}^2$



**Continuous Raceway**  
 Smart Building Friendly



**U-Factor (ANSI/NFRC 100/200)**  
 Fixed: 0.18-0.45 Spandrel: 0.14



**Static water penetration resistance (ASTM E331)**  
 15 PSF



**F-Rating (ASTM E2307)**  
 2h



**Available dissociated stack for universal design expression**



**OITC (ASTM E90 & E413)**  
 29-38

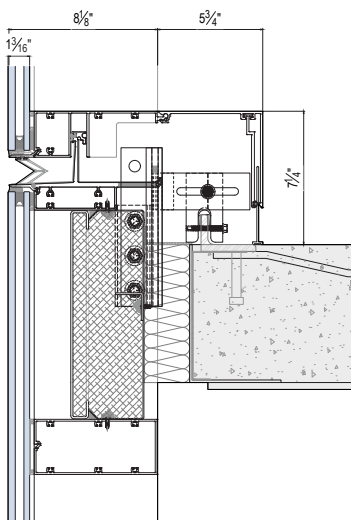


**Structural Performance (ASTM E330)**  
 IValue: 21 for typical unreinforced large spans  
 IValue: 60 for unreinforced large spans "Deep" system

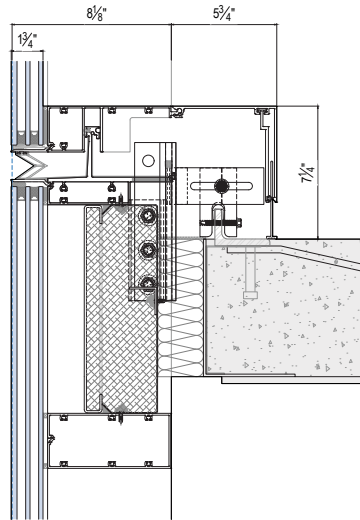


**Crew Size 6-8**

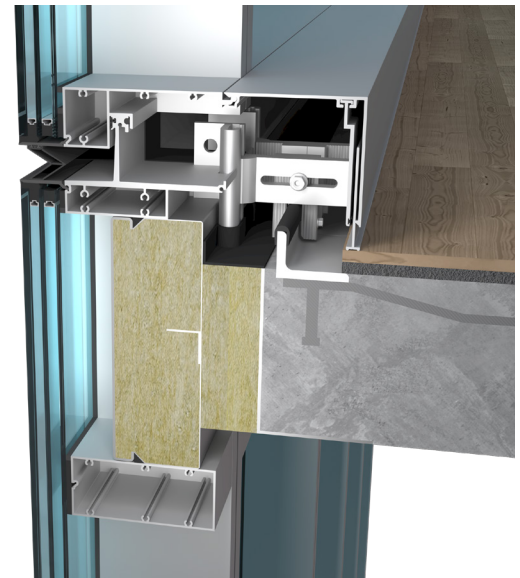
## SYSTEM DETAILS



TYPICAL RWW CURTAIN WALL DETAIL



TRIPLE GLAZED RWW CURTAIN WALL DETAIL



RWW CURTAIN WALL SECTION VIEW

\*=modeled valence detail with 6mm x 12mm x 6mm x 12mm x 6mm triple glazing IGU