

SYSTEM FEATURES

- Structural mullion depth 4"
- 4-sided structurally glazed system
- Fully unitized shop built system
- Fixed, project-out awning, project-out casement
- Zero sight-line vents
- Single action handle, multi-point locking system
- Single action ADA compliant operable vents
- Pressure equalized system
- Interior polyester powder coat finish, custom color
- Exterior 2/3-coat PVDF finish, custom color
- Integral metal panel infill options
- Integral louver infill options
- 1-pc extrusion slab cover options
- Full head/sill/jamb receptor system
- Glass from 0.94" to 1.77" thick [24 mm to 30 mm]
- Shop fitted fully sealed/insulated back-pan

RWW 8000 SERIES PROPERTIES

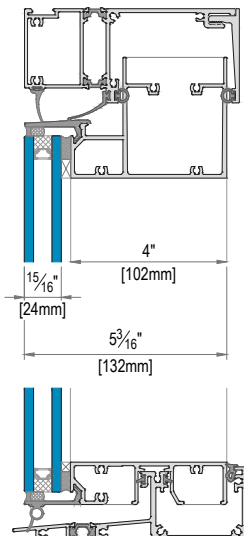
Allowable Air
0,10 CFM/SQ.FT. @6.24 PSF

Water infiltration
12 PSF

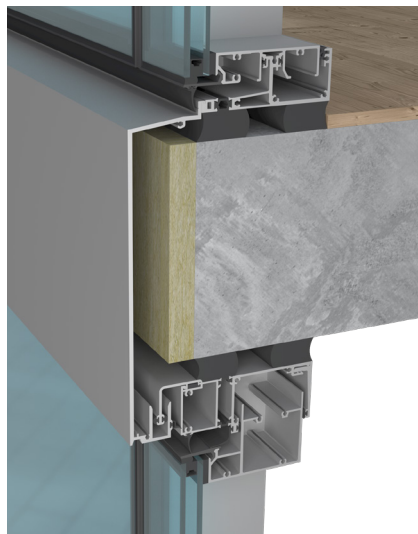
NFRC U-Factor
0,29-0,46 BTU/hrft²°F

CRF: 58 to 72
STC: 31 to 45

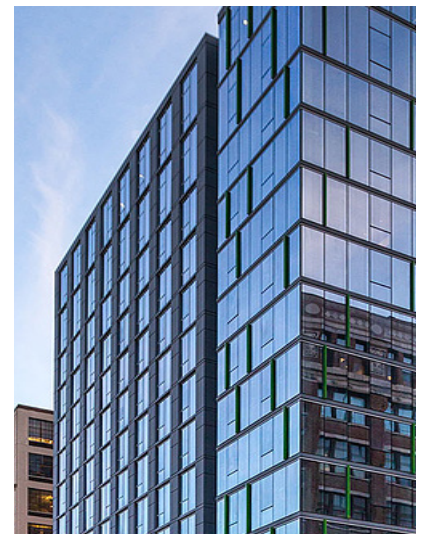
SYSTEM DETAILS



TYPICAL RWW 8000 SERIES SECTION DETAIL



RWW 8000 SERIES SECTION VIEW



EXTERIOR VIEW



EXTERIOR VIEW



INTERIOR VIEW